

# TOGGLEBLOK<sup>®</sup> CHAMBERS

ToggleBlok<sup>®</sup> Chambers are now available with pre-installed ToggleBlok<sup>®</sup> Valves which can be delivered directly to site.

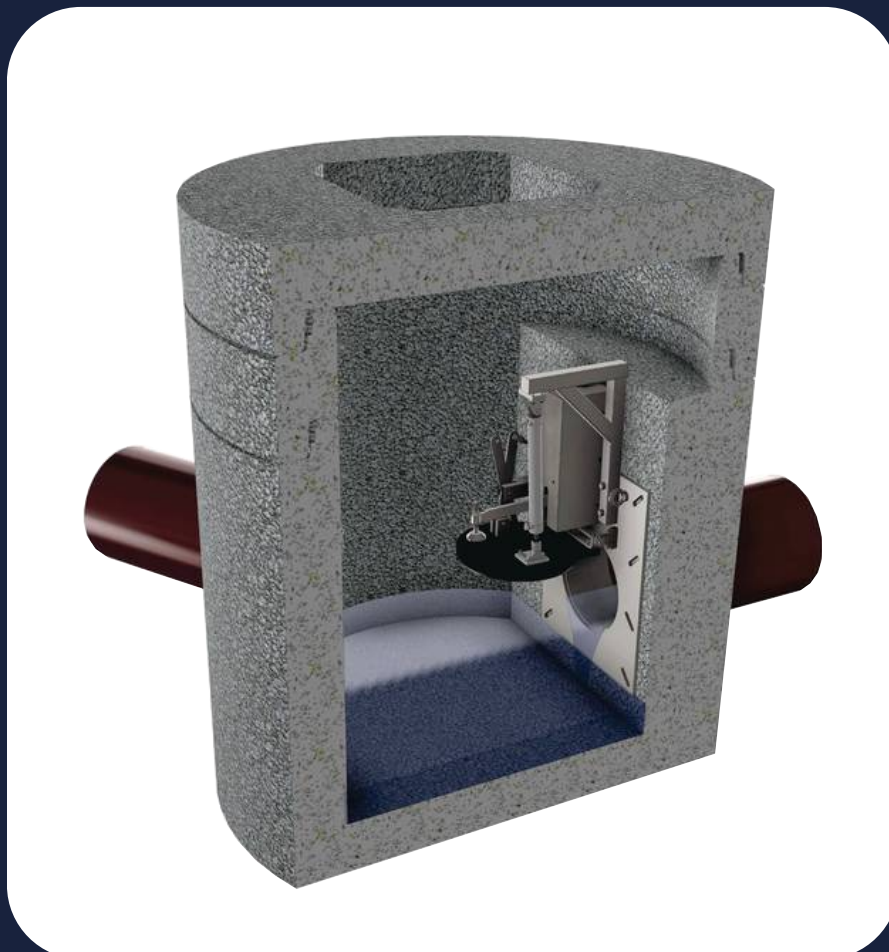
The ToggleBlok<sup>®</sup> Chambers simplify the installation process, eliminating the requirement for confined space working, speeding up the installation time and removing the requirement to coordinating with different contractors.

Controls can be installed by a single person during final stages of construction programme.

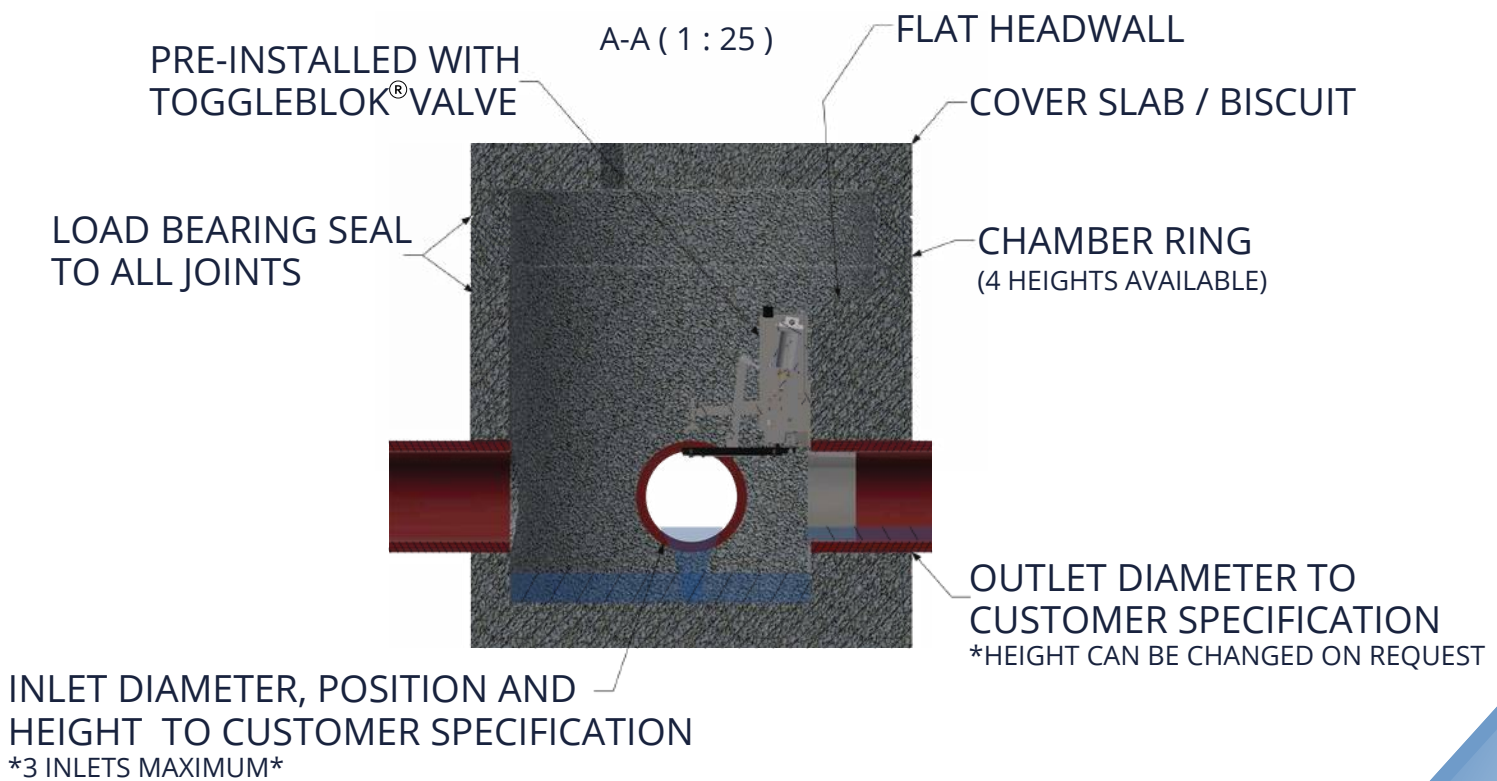
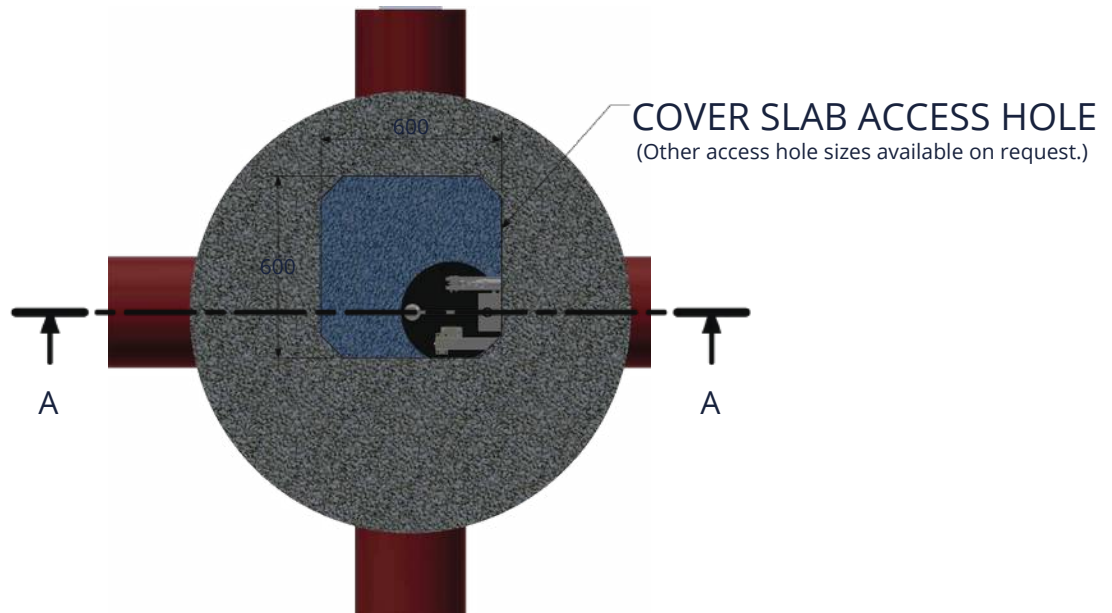
The valve will be installed in a closed base chamber with the valves fitted to the inlet or outlet.

Plastic chambers are also available.

Additional rings are available to achieve the required invert levels and also the cover slab/biscuit.



# CHAMBER DIAGRAM



# 1200 CHAMBER

Suitable for installing 150, 225 & 300 valves.

## Order code breakdown:

TBV size

- Chamber Diameter & Ring Height

- Inlet No.1: Diameter-Angle-Height

- Inlet No.2: Diameter-Angle-Height

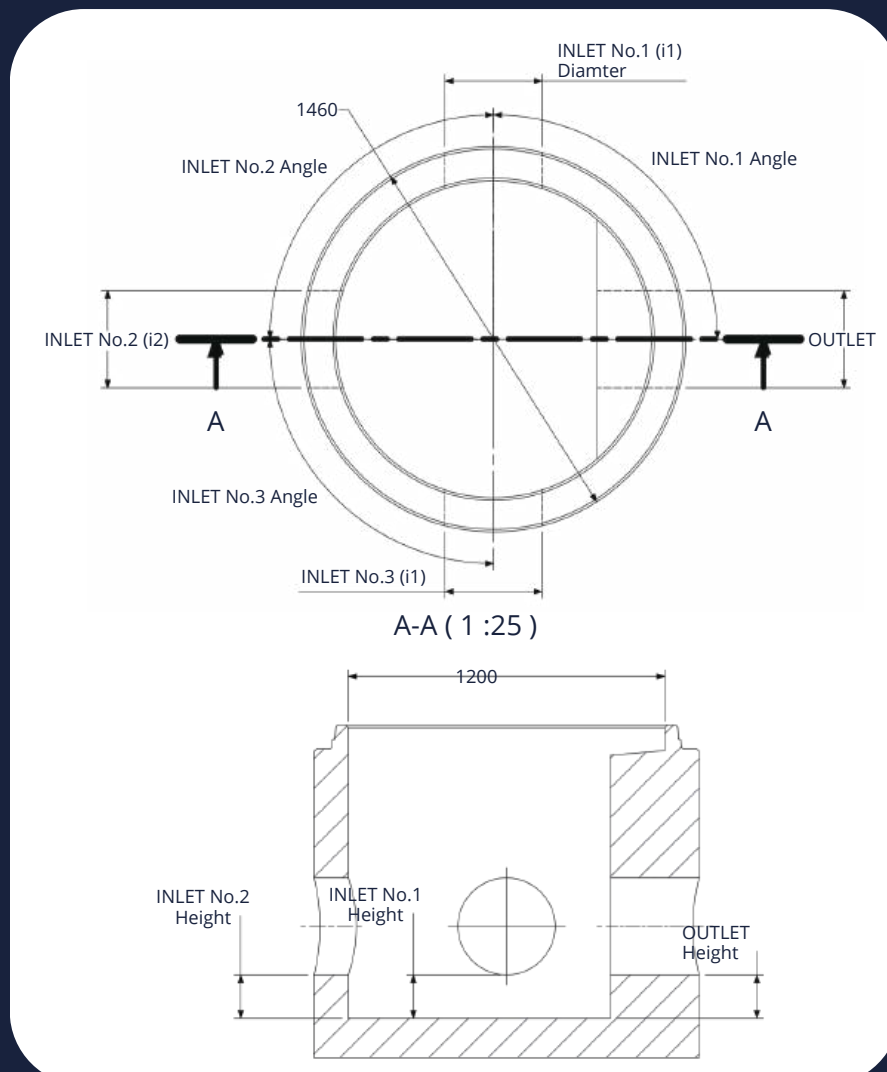
- Inlet No.3: Diameter-Angle-Height

- Outlet Diameter



## Order Code Example:

TBV225\_1200-500\_i1-150-90-300\_i2-200-180-300\_300



# 1500 CHAMBER

Suitable for installing 150, 225, 300, 375, 450, 500, 600 & 675 valves. Chambers greater than 1500mm are available on request.

## Order code breakdown:

TBV size

- Chamber Diameter & Ring Height

- Inlet No.1: Diameter-Angle-Height

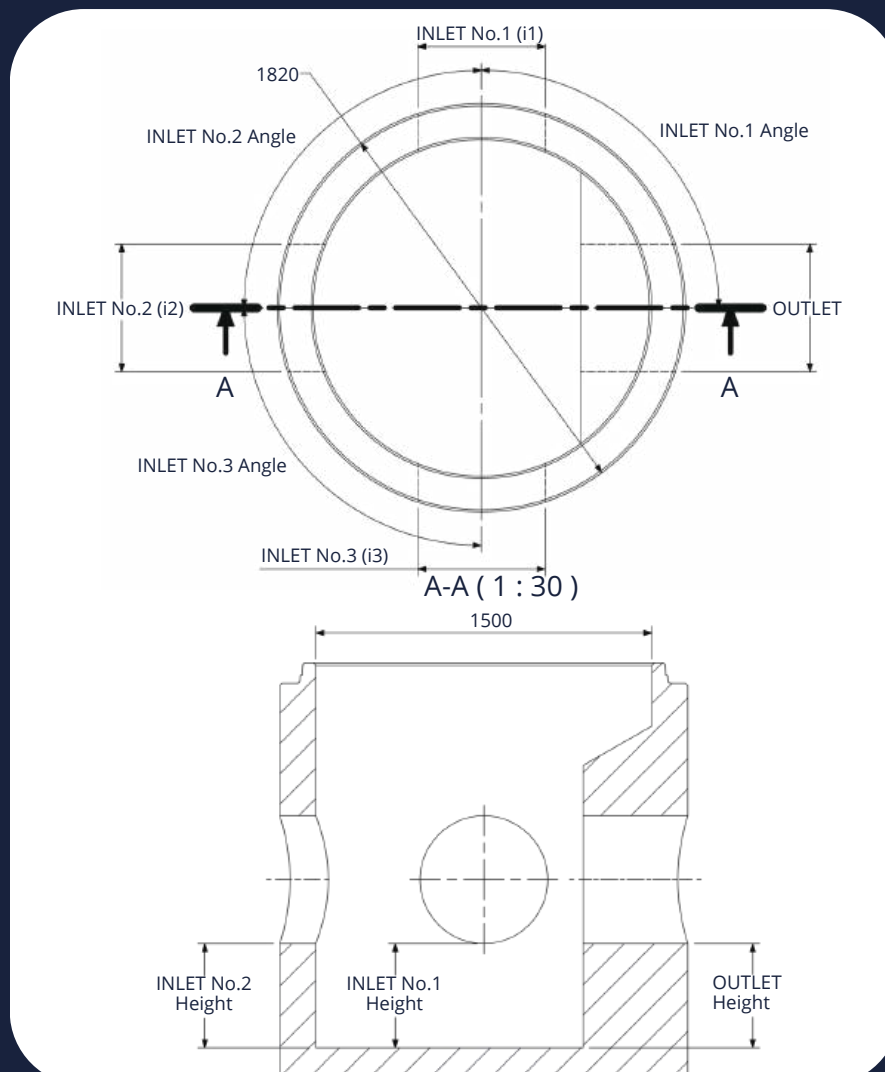
- Inlet No.2: Diameter-Angle-Height

- Inlet No.3: Diameter-Angle-Height

- Outlet Diameter

## Order Code Example:

TBV600\_1500-1000\_i1-150-90-300\_i2-200-180-300\_600



# CHAMBER RING

## 1500 Chamber

Additional chamber rings are available to achieve the required invert levels. Rings are available for 1200 & 1500 chamber.

Dimension A:

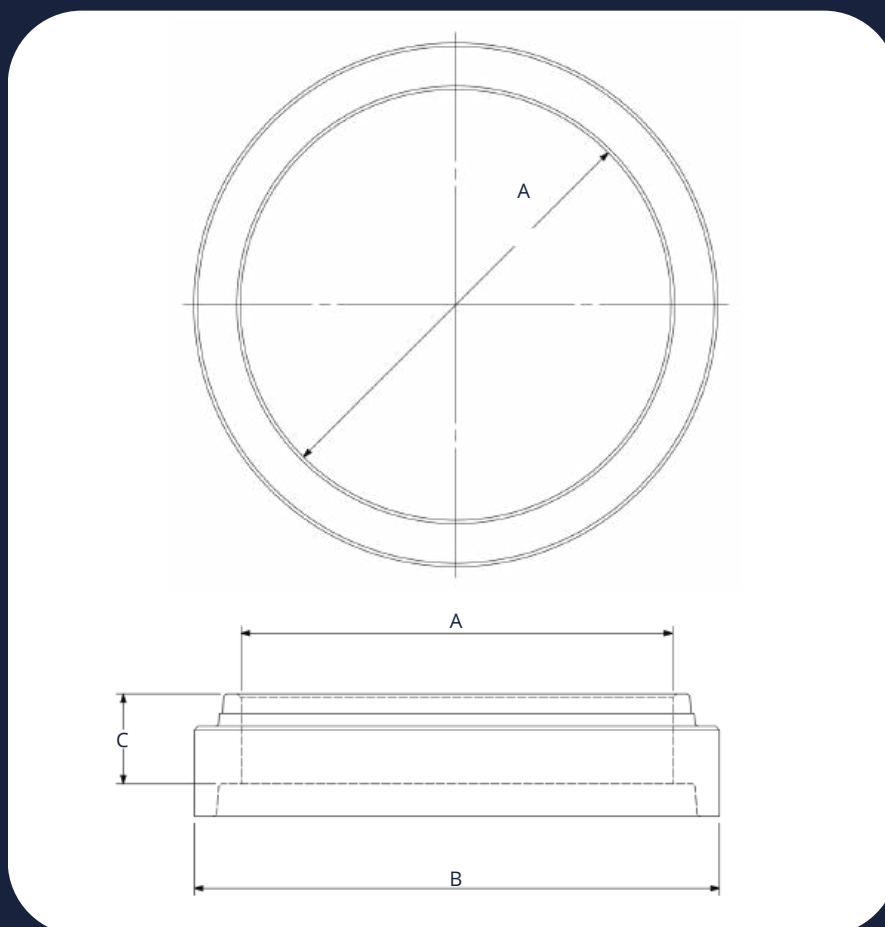
Available in 250, 500, 750, 1000



Order Code Example:

TBV225-1200/500-i1-150-90-300\_i2-200-180-300\_300

RING DIMENSIONS		
A	B	C
1200	1460	250, 500, 750, 1000
1500	1760	250, 500, 750, 1000





# COVER SLAB/ BISCUIT

Cover slabs available for both 1200 and 1500 chambers.

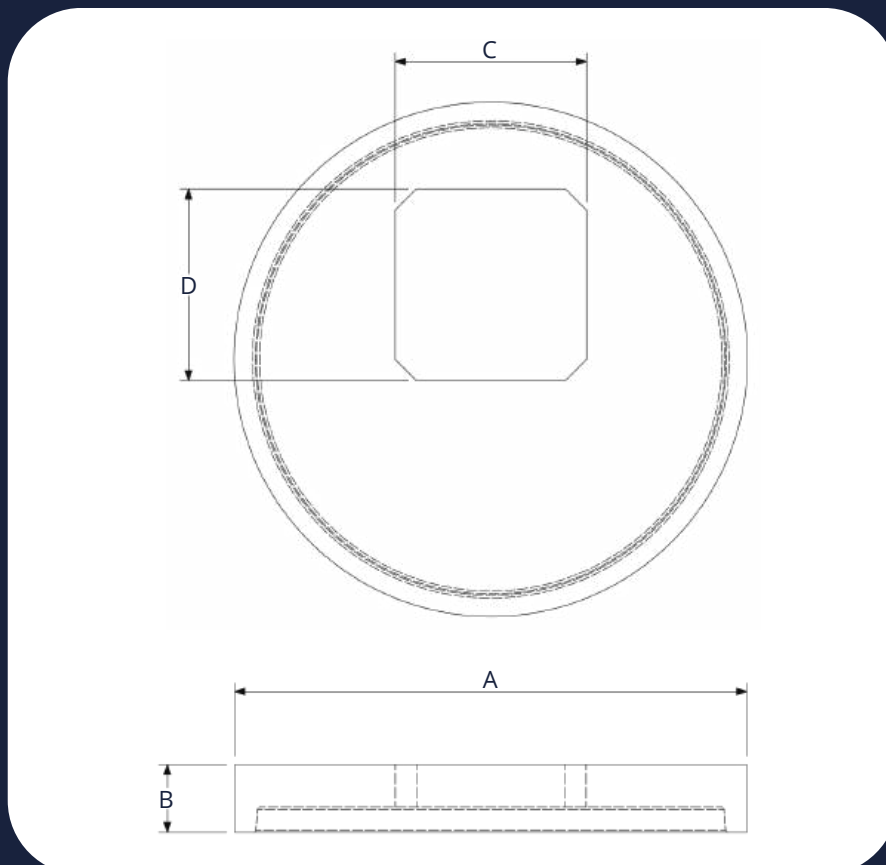
1200 comes as standard with a 600 x 600 access hole.

1500 comes as standard with a 675 x 675 access hole.

Other access hole sizes available on request.



COVER SLAB DIMENSIONS				
Dimension	A	B	C	D
1200	1460	240	600	600
1500	1810	240	675	675



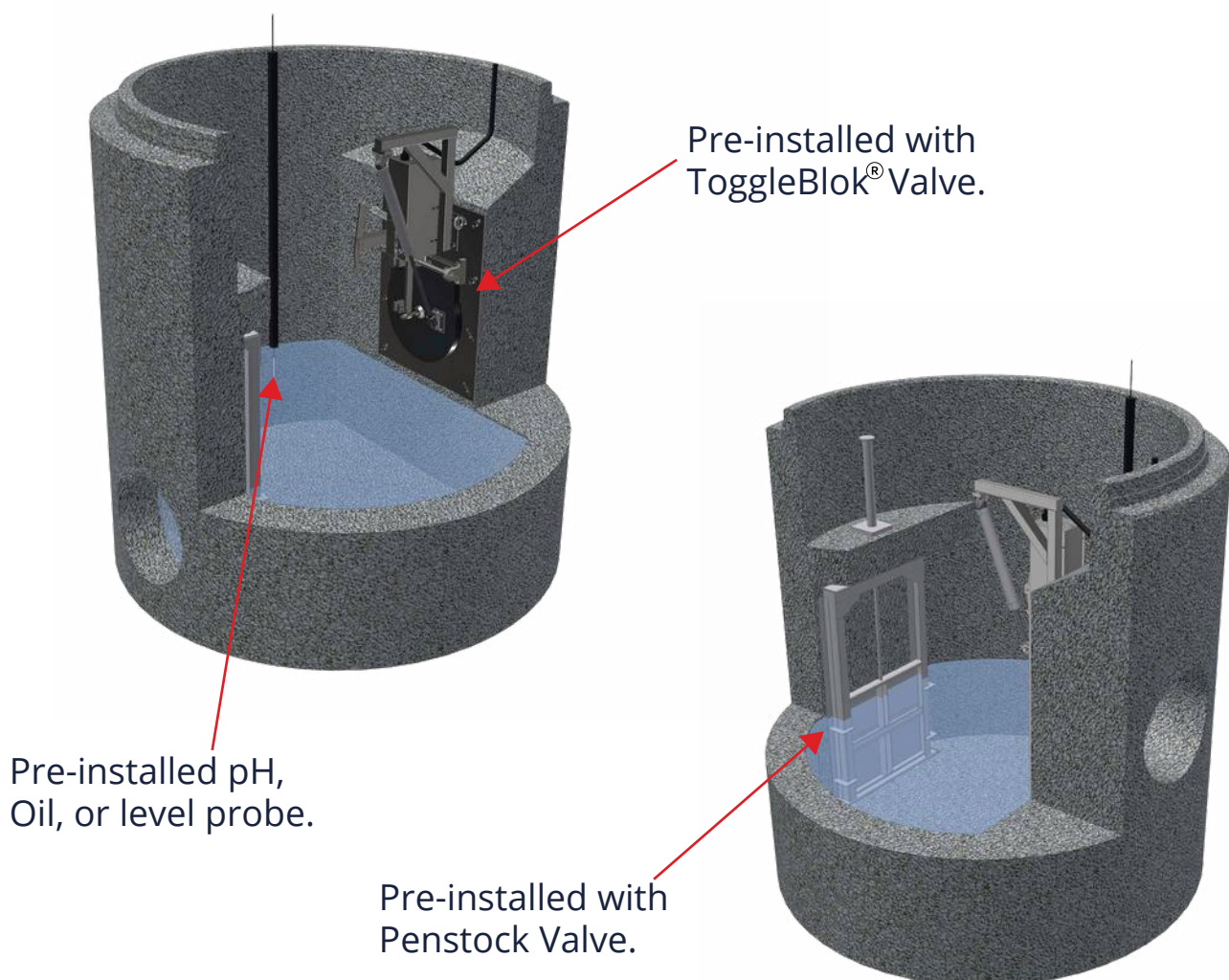
# TURNKEY SOLUTIONS

With over 40 years experience with drainage control, monitoring and telemetry, Sandfield offer turnkey solutions either in our chambers or fitted to yours.

Below are just a few examples, many more can be found in our online [case studies](#).

## Pollution Containment Chamber with Flow control

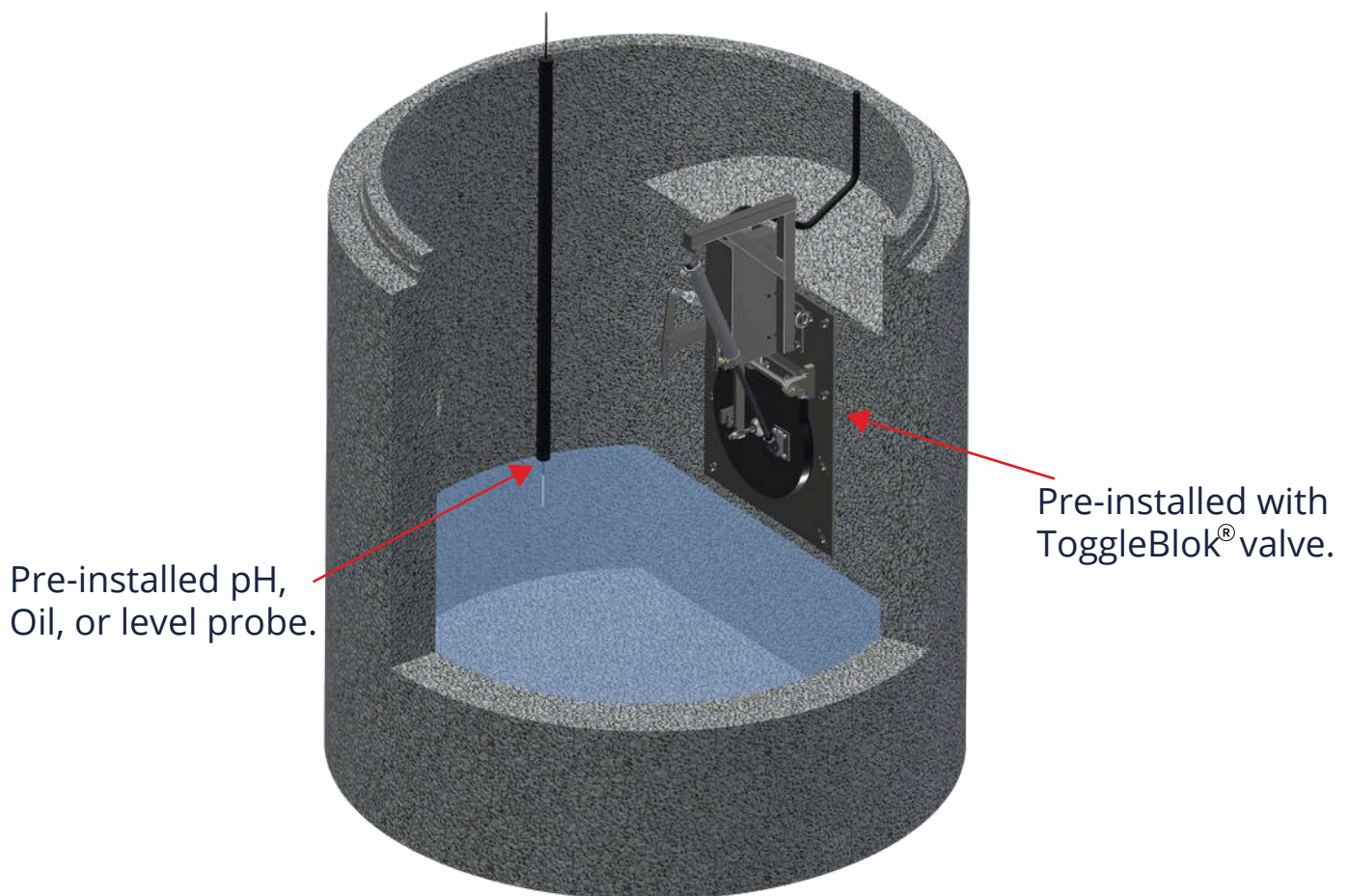
These chambers are fitted with both penstock valves or other flow control device and a ToggleBlok<sup>®</sup> Valve. The ToggleBlok<sup>®</sup> is the dead stop, the water can be monitored in the chamber.



## TURNKEY SOLUTIONS

### Monitoring Chamber with automatic activation.

The chamber is supplied with monitoring devices and a ToggleBlok<sup>®</sup> valve is fitted to the outlet of the chamber. Water height, Oil, pH, Turbidity can be monitored in this system, once the alarm level is reached the Toggleblok<sup>®</sup> valve is activated.





## TURNKEY SOLUTIONS

### Automated Flood control system.

A high level probe is mounted within the River, once levels rise to predetermined level then the valve mounted in the off seating position automatically closes to prevent back flow up the pipework. Any contaminated water may then be pumped from the chamber and reprocessed or tankered away.

